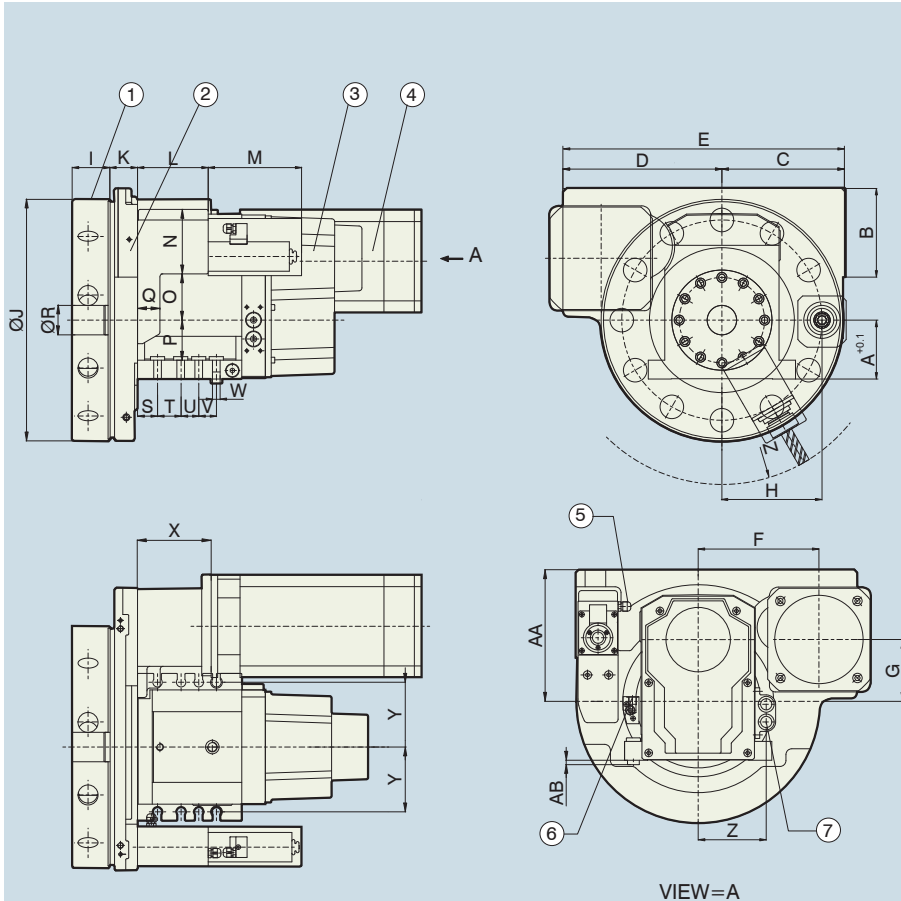




Main Features

- Two motor operation; Electric motor for turret indexing and servo motor for tool drive.
- Turret indexing is through parallel cam index mechanism.
- Rotary tool unit of Modular construction fitted on BTP series turret for live tool function.
- Only tool in working position gets drive.



- 1) Tool Disc 2) DTT Unit 3) BTP Turret 4) Servo Motor (Not in Scope of supply)
5) Electrical Entry for Drive actuation 6) Coolant Inlet 7) Electrical entry for Turret

	DTT-63	DTT-80	DTT-100
A	63	80	100
B	75	101.5	150.5
C	155	177	208
D	259	267	270
E	416	444	478
F	180	201	205
G	86	100	105
H	120	135	170
I	52	56	64
J	298	338	410
K	40	43	47
L	120	120	120
M	115	117	116.5
N	95	106	109
O	66	66	79
P	43	55	68
Q	32	38	38
R	30	40	50
S	24	37	34
T	30	32	40
U	30	33	30
V	30	32	30
W	M8	M10	M12
X	127	127	126
Y	165	190	220
Z	389	452	558
AA	163	190	223
AB	7.5	7.5	7.5
AC	91	100	115

Specifications		DTT-63	DTT-80	DTT-100
No of Stations		8/12	8/12	8/12
VDI Tool shank	mm	Ø20	Ø30	Ø40
PCD of the Tooling	mm	200/240	240/270	340/370
Tool coupling profile		DIN5480	DIN5482/DIN5480	DIN5482/DIN5480
Max Power (Tool Drive)	kW	5	6	8
Max Tool speed	rpm	6,000	6,000	5,000
Max Torque	Nm	15	20	40
Transmissible Ratio		1:1	1:1	1:1
Tool Drive Motor Options				
Fanuc		α1.5	α 2	α 3
Siemens		1FT6064	1FT6084	1FT6086